

## NORTH GEORGIA CONFERENCE OF THE UNITED METHODIST CHURCH DISASTER RESPONSE PROTOCOL



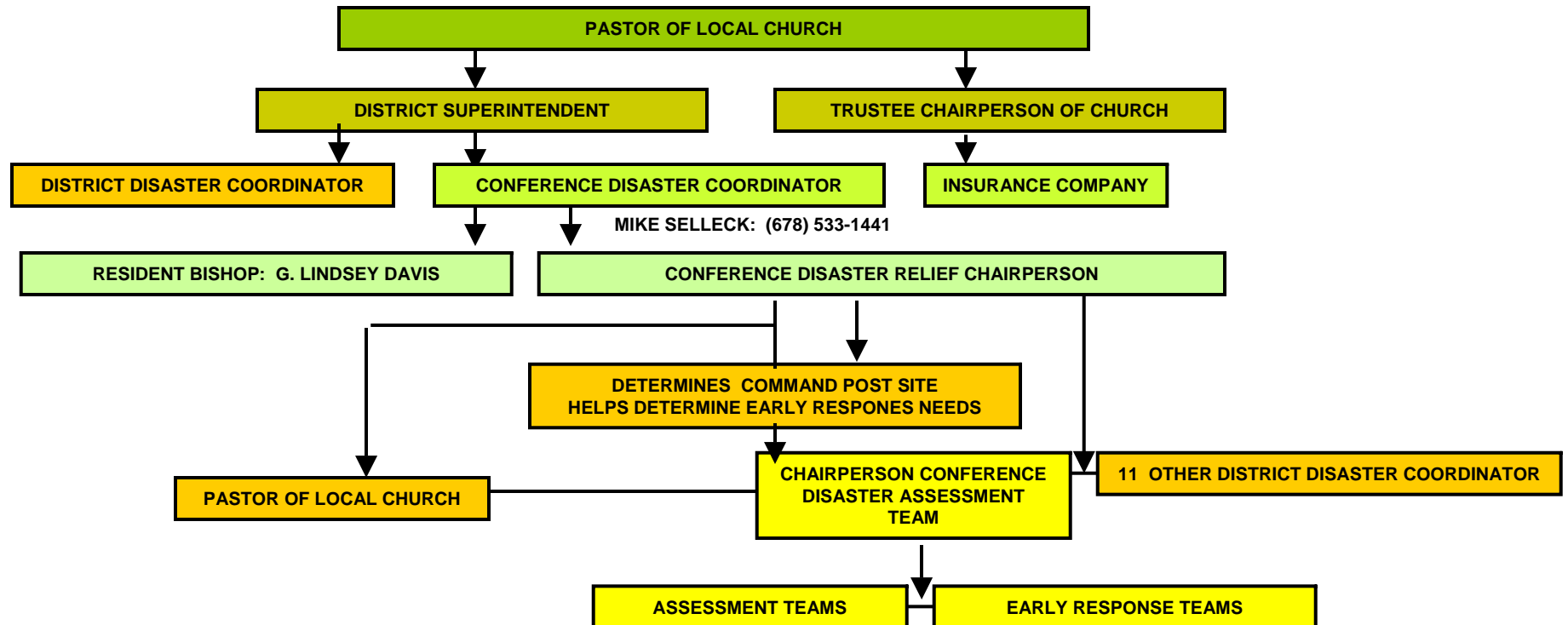
### EMERGENCY CALLING CHAIN & RESPONSE PROCEDURE

1. Immediately following a disaster, the Pastor of a local church inspects damage to any/all church property and makes two phone calls to:
  - a) The District Superintendent
  - b) The Trustee Chairperson for their local church (*Trustee Chairperson contacts the insurance company for the local church and begins deliberations according to churches policy.*)
2. The District Superintendent contacts:
  - a) The District Disaster Coordinator
  - b) The Conference Disaster Coordinator: Mike Selleck @ (678) 533-1441
3. The Conference Disaster Coordinator contacts:
  - a) The Resident Bishop: G. Lindsey Davis
  - b) The Conference Disaster Relief Chairperson: Mike Yoder @ 770-483-6384
4. The Conference Disaster Relief Chairperson contacts the following persons:
  - a) Pastor of the local church who initiated the call
  - b) Chairperson of the Conference Disaster Assessment Teams
  - c) Eleven other District Disaster Coordinators
5. The Chairperson of the Conference Disaster Assessment Team visits damage site, calls in other teams as needed to assess conditions. Through coordination with the Conference Disaster Relief Chairperson, determines the number of early response teams needed to cover disaster area.
6. The Conference Disaster Relief Chairperson determines site for a command post and selects as many helpers as possible to meet the needs of the command post and related disaster area.

**NORTH GEORGIA CONFERENCE OF THE UNITED METHODIST CHURCH  
DISASTER RESPONSE PROTOCOL**



**EMERGENCY CALLING CHAIN & RESPONSE PROCEDURE**



**NORTH GEORGIA CONFERENCE OF THE UNITED METHODIST CHURCH  
DISASTER RESPONSE PROTOCOL**



**EMERGENCY CALLING CHAIN & RESPONSE PROCEDURE**

